



## **Round Transits (RT)**

**For pipe, conduit and single cables  
passing through walls, floors, bulkheads  
and decks**

*Patent Pending*



## **Simple. Fast. PRO!**

**Contractor and engineering-level solutions for  
single cables in conduit or sealing pipe or  
conduit as it passes through walls, floors,  
bulkheads and decks.**

Lower cost, high performance to replace inferior solutions

Snap-lock™ adjustable layers for cable, conduit and pipe O.D.'s  
from .3" to 2.3", and to seal cables in 2", 3" and 4" openings

Lighten the load with high-performance  
engineering plastics and elastomeric materials



*Patent Pending*

**CapelIndustries.com  
816.489.6471**

**An industrial "plug" seal that easily installs around existing single cables to seal 2", 3" and 4" conduits, or to seal pipes, cables or conduits passing through structures when protection from fire, blast, rodents, vibration, water, gas and dust is required.**



**For Applications That Require Security and Protection**

Data Centers & Telecom

Military

Chemical

Utilities

Water Treatment & Desalination

Solar

Shipbuilding

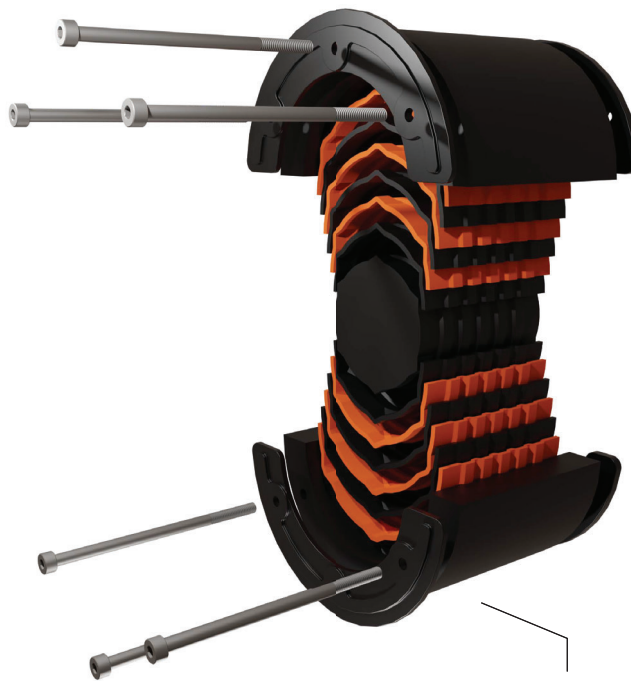
Pulp & Paper

Oil & Gas

Wind Power

Mining

OEMs



Simple, 2-piece installation

Industrial-strength mechanical compression to secure and seal

Advanced polymer, non-corrosive materials for use in the most harsh and hazardous applications

3 Sizes to fit the most common conduits and openings

Patent Pending

**Protection Against**

Rodents

Fire / Smoke

Blast

Water, Dust and Gas Ingress

Vibration

**Resistant To**

Water

Corrosion

UV

Impacts

Acids

Alkalis

Mildew

Aging

Sunlight

Abrasion

**Non-Metal Industrial Cable, Conduit and Pipe Seals for the World's Toughest Environments, Designed for Global Certification\***

**Standardized Sizes to Fit the Most Common Round Openings, with Snap-Lock™ Layers to Adjust to Multiple Diameters of Cable, Pipe and Conduits, for a One-and-Done Solution that Lowers Costs, Simplifies Design Specification, and Speeds Installation!**

\*Pending Certification